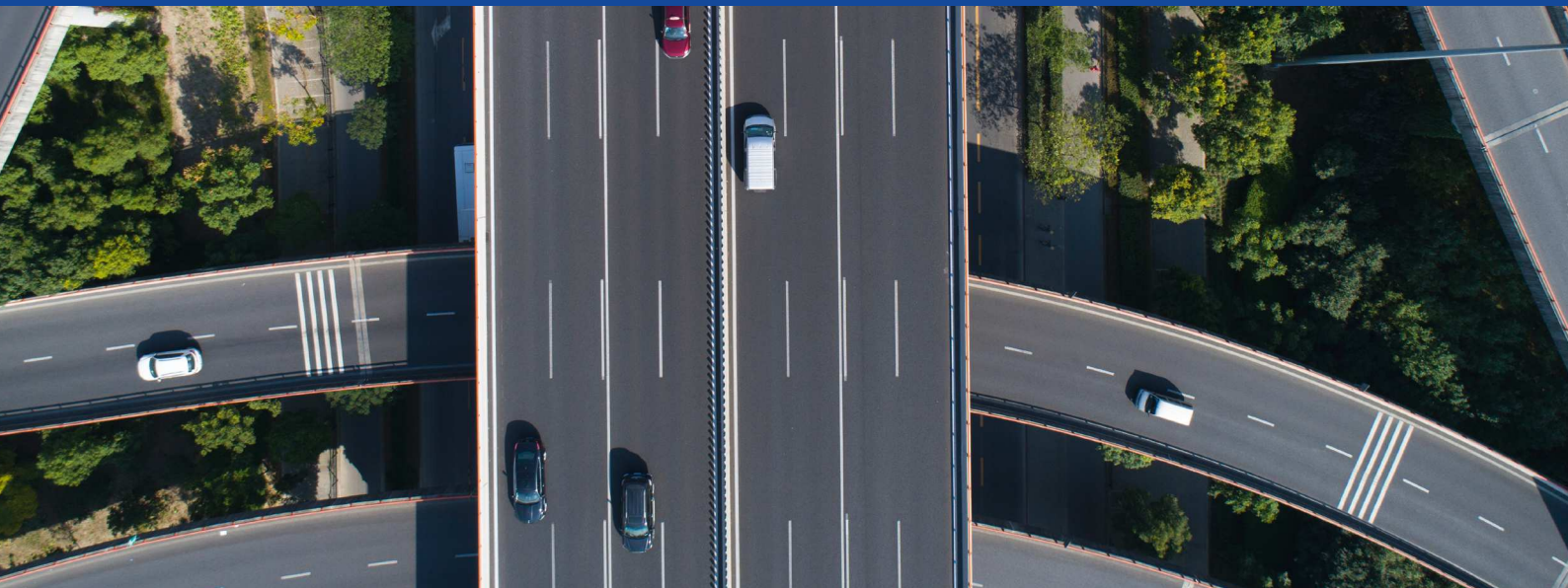


ExxonMobil

Tomorrow Runs on Innovation





Let ExxonMobil Take You Further

ExxonMobil is a leader in the asphalt industry, manufacturing and marketing asphalt products globally for use in road paving and industrial applications. For more than a century, we have been committed to delivering reliable products and services consistently through our team of trusted advisors. In more than 25 countries around the world, customers achieve success from our delivered asphalt and technical solutions.

Excellence is Our Commitment to You

Quality Control

Quality begins with the selection of the optimal raw materials. ExxonMobil's proprietary Asphalt Crude Approval process ensures that only quality-yielding crudes are selected for our asphalt manufacturing needs.

Product Integrity

We implement and follow the Global Product Quality Management System stringently. Our rigorous attention to quality combined with state-of-the-art manufacturing capabilities ensure the utmost product quality and accurate product representation, every single time.

Supply Reliability

For over a century, we have been delivering a broad portfolio of product and service offerings customised to the needs of the road, roofing, and airport sectors and some specialty applications. Our asphalt has been used for the paving of major expressways, bridges and airports in Asia Pacific, namely China, Australia, Indonesia, Malaysia, Vietnam, Thailand, Laos and Cambodia. The timely delivery of our products, enabled by our network of refineries, provides assurance for your project planning.

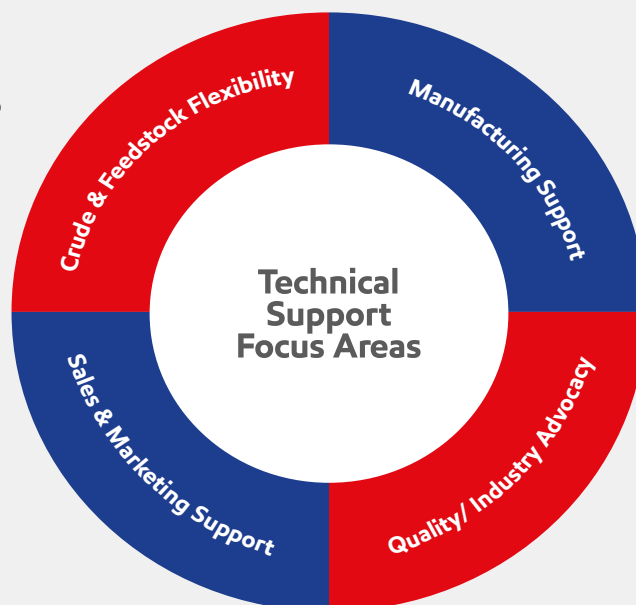
Leading Technology

Through constant refinement of our technical expertise, our global asphalt laboratories combine industry-leading knowledge with cutting-edge instrumentation and testing facilities to drive businesses further. These technologies include:

- Full slate of asphalt specification testing around the world
- Pilot asphalt distillation unit that produces asphalts directly from a crude oil
- Comprehensive rheological and chemical analysis that continuously support R&D

Asphalt Technical Capability

Proprietary process to screen and test new crude slates to ensure no impact to product quality



Support refineries in optimising manufacturing processes and ensuring product integrity

Technical support (e.g., formulation, end-application, testing) for customers

Develop data and science to advocate for sustainable technology advancements

From Our Refineries and Terminals to Your Business



Solutions Driven

ExxonMobil's experienced Asia Pacific sales and technical teams are committed to understanding and meeting your needs beyond delivering quality asphalt. Your advisors have access to a global network of resources and technical experts, for cost-effective and supply-reliable solutions that work for your business.



World-class Asphalt, Every Time

As your business progresses with the latest standards, we adapt to the evolving needs of the paving and roofing industries. ExxonMobil's Asphalt products help customers pave roads with the quality to take on the toughest road and weather conditions.



Reliable, Durable Roads:

High quality for long life cycles, able to withstand heavy traffic and extreme weather conditions



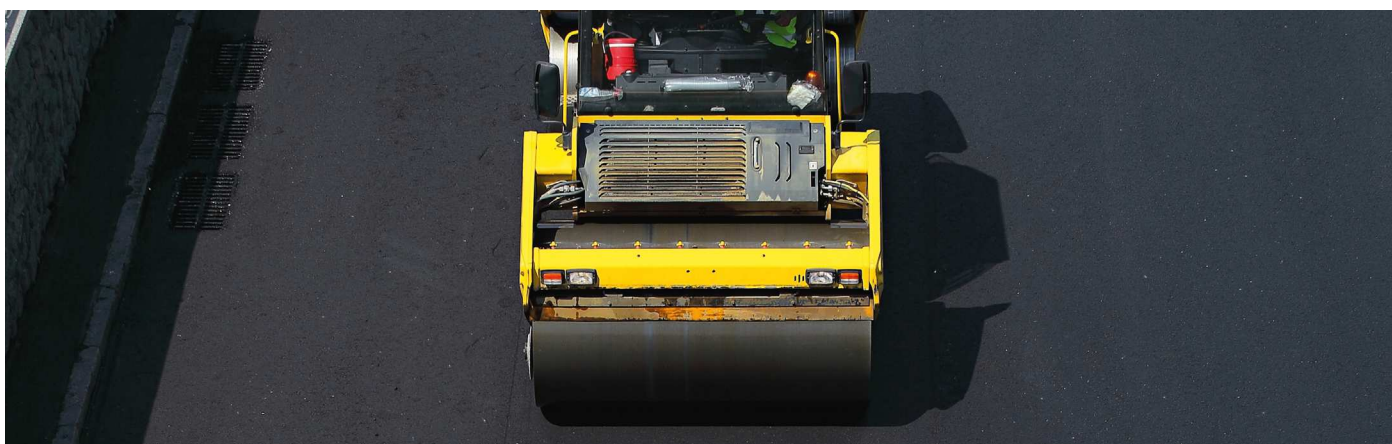
Recyclable Roads:

Road hotmix made from Asphalt can be milled and repurposed, reducing use of virgin gravels



Advanced Technology:

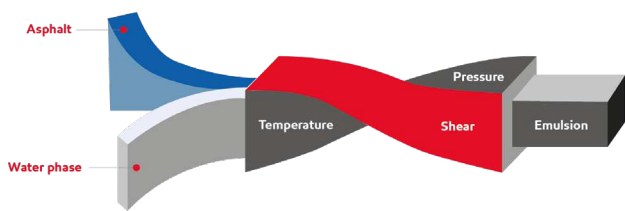
Improved adhesion and elasticity with each layer



Paving Asphalt

Our Paving Asphalt products are derived from specially selected crude oils and manufactured by carefully controlled refining processes. Honed with decades of production expertise, it is our quality you can depend on, in a range of grades to suit your requirements.

Asphalt Emulsion



Asphalt Emulsion is produced using ExxonMobil's patented Static Mixer Emulsification Process (SMEP).

Cationic Asphalt Emulsion is a combination of asphalt, water and emulsifier agents, produced with the patented Static Mixer Emulsification Process (SMEP) developed by ExxonMobil. Emulsion products come in different grades to suit different settings, providing flexibility according to the project's requirements.

SMEP enables two key characteristics to be controlled: particle size distribution (for storage stability and viscosity) and emulsifier transfer between bitumen and water phases (for adhesion and breaking).



Polymer Modified Asphalt (PMA)

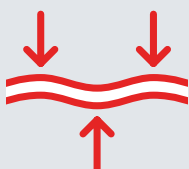
Polymer Modified Asphalt (PMA) are asphalt blends with polymer and additives.

PMA help improve the elasticity of the pavement, which is particularly useful in environments that experience extreme temperatures, high shear and long loading times, as well as high traffic volume. Its heavy-duty properties are designed for durability and strong resistance to rutting, shearing, and cracking.

PMA are the Future of Asphalt

The pliancy of PMA means flexible modification to better support the loads of increased traffic volume, thereby extending the life of road services. This versatility also allows for sustainable applications such as porous asphalt mix and thin overlay.

How PMA Complement Asphalt



Improved visco-elastic properties and cohesion for outstanding performance



Reduced temperature susceptibility to better counter extremities



Faster stress relaxation for prolonged road service



Supports advanced roadmaking techniques and quality

Including thinner layers of application
Porous roads for drainage

ExxonMobil is here to support you and your business with superior product integrity and reliable supply of asphalt. The following products are available for the Asia Pacific markets.

Please contact your local ExxonMobil sales representative or visit us at www.exxonmobil.com for more information.

Grades:

Paving Asphalt AC 60/70	Paving Asphalt 170
Paving Asphalt 60/70	Paving Asphalt 320
Paving Asphalt 60/80	Asphalt Emulsion (CRS-2, CSS-1, CMS-2h, EAP)
Paving Asphalt 80/100	
Paving Asphalt VG30	Cutback Asphalt

Learn More



Learn More (Thai)

