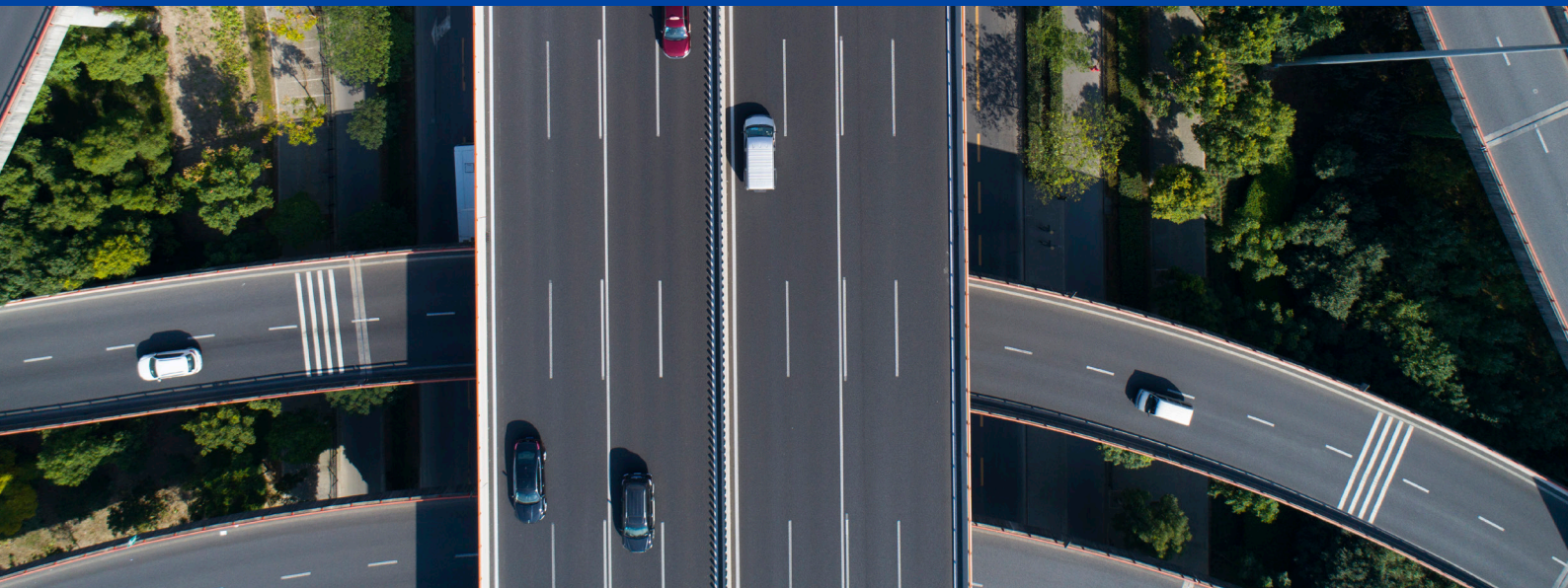




Paving the way  
for the future

**ExxonMobil**





## Let ExxonMobil take you further

ExxonMobil is a leader in the bitumen industry, manufacturing and marketing bitumen products globally for use in road paving and industrial applications. For more than a century, we have been committed to delivering reliable products and services consistently through our team of trusted advisors. In more than 25 countries around the world, customers achieve success from our delivered bitumen and technical solutions.

## Excellence is our commitment to you

### Quality control

Quality begins with the selection of the optimal raw materials. ExxonMobil's proprietary Bitumen Crude Approval Protocol ensures that only quality-yielding crudes are selected for our bitumen manufacturing needs.

### Product integrity

Our rigorous attention to quality combined with state-of-the-art manufacturing capabilities ensure the utmost product quality for durable roads, and accurate product representation, every time.

### Product offer

For over a century, we have been delivering a broad portfolio of product and service offerings customised to the needs of the road, roofing, airport sectors and some specialty applications. Relying on an integrated broad supply-chain network, we ensure timely delivery of our products, providing assurance for your project planning.

### Leading technology

Through constant refinement of our technical expertise, our global bitumen Technical centres combine industry-leading knowledge with cutting-edge instrumentation and testing facilities to drive businesses further. These technologies include:

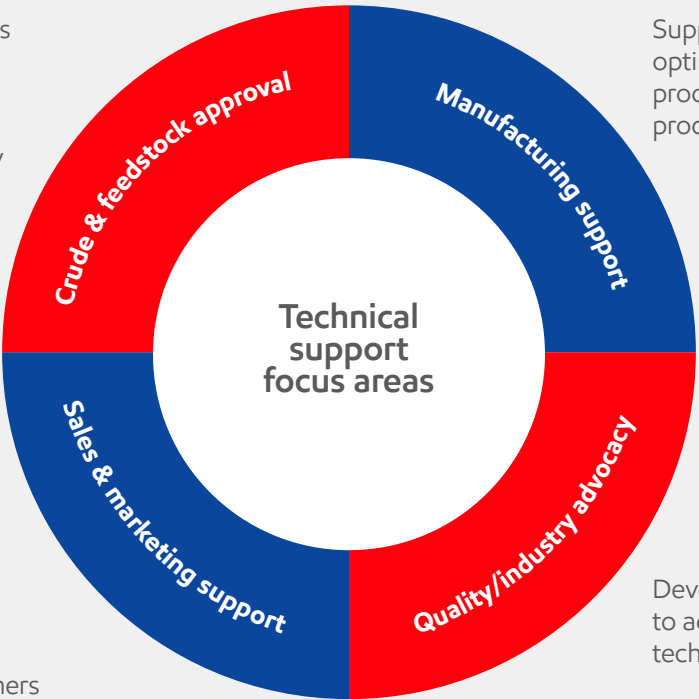
- Full slate of bitumen specification testing around the world
- Pilot bitumen distillation unit that produces bitumens directly from a crude oil
- Comprehensive rheological and chemical analysis that continuously support R&D

### What our customers say about us

- Operational excellence
- Timeliness of loading laycan and delivery
- Timely and accurate (shipping) documentation for smooth operation
- Very good understanding of customer's product and service requirements
- Technical support at hand, supported by a global technical network

# Bitumen technical capability

Proprietary process to screen and test new crude slates to ensure product quality consistency over time



Support refineries in optimising manufacturing processes and ensuring product integrity

Technical support (e.g., formulation, end-application, testing) for customers

Develop data and science to advocate for policy and technology advancements

## Our bitumen refineries, terminals and technical centres



### Solutions driven

ExxonMobil's experienced sales and technical teams are committed to understanding and meeting your needs beyond delivering quality bitumen. Our advisors have access to a global network of resources and technical experts, for cost-effective and supply-reliable solutions that work for your business.





## World-class bitumen, every time

ExxonMobil's bitumen products help customers pave roads with the quality to take on the toughest road and weather conditions.



### **Reliable, durable roads:**

High quality for long life cycles, able to withstand heavy traffic and extreme weather conditions



### **Recyclable roads:**

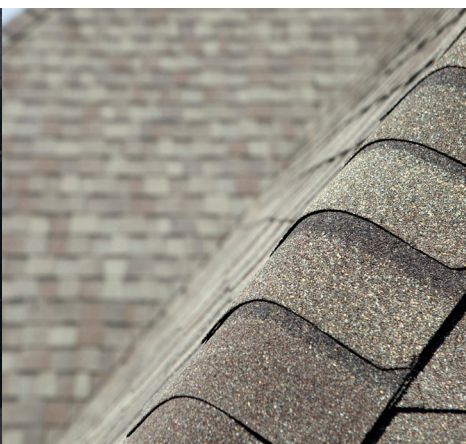
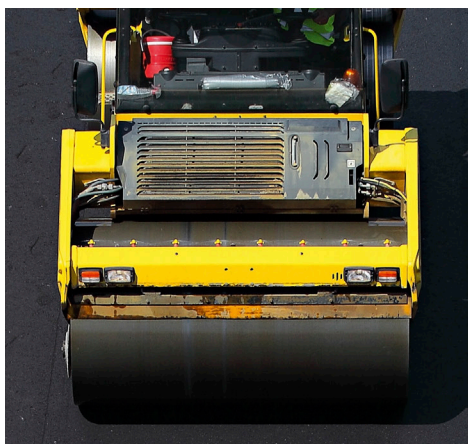
Road hotmix made from bitumen can be milled and repurposed, reducing use of virgin gravels\*



### **Advanced technology:**

Improved adhesion and elasticity with each layer

As your business progresses with the latest standards, we adapt to the evolving needs of the paving and roofing industries.



Our bitumen products are derived from specially selected crude oils and manufactured by carefully controlled refining processes. Honed with decades of production expertise, it is our quality you can depend on, in a range of grades to suit your requirements.

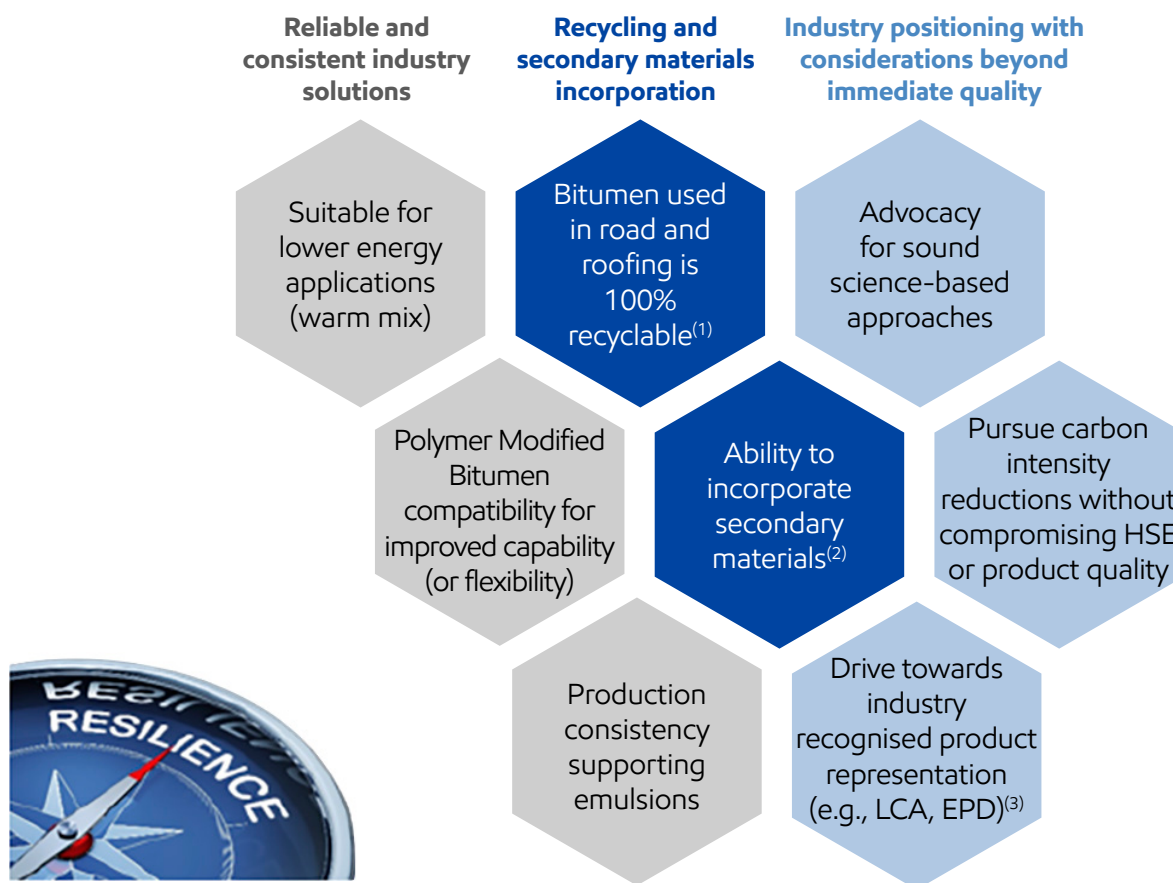
\*For more information visit <https://www.eurobitume.eu/>



## Advancing Climate Solutions and Sustainability

We recognise our role in creating energy and sustainable solutions that improve quality of life and meet society's evolving needs. From developing detailed roadmaps to reduce the Scope 1& 2 greenhouse gas emissions in our operated assets to providing solutions to help our customers address theirs, we strive to play a leading role in the energy transition, and help our customers meet their goals. Our bitumen products are no exception and can be used in conjunction with other products to help support our customers and society's sustainability ambitions in a number of ways, from long-life pavements to fully recyclable roads. Please visit our Sustainability and Advancing Climate Solutions reports to find out more.

## Our bitumen business remains resilient through energy transition



(1) For more information, please visit Sustainability ([eurobitume.eu](http://eurobitume.eu))

(2) Materials incorporated should not adversely impact HSE, quality and future recyclability

(3) LCA - Lifecycle Assessment, EPD - Environmental Product Declaration

ExxonMobil is here to support you and your business with superior product integrity and reliable supply of bitumen. The following products are available for the European markets.

Please contact your local ExxonMobil sales representative or visit us at [www.exxonmobil.com](http://www.exxonmobil.com) for more information.

### Grades:

|                           |                          |
|---------------------------|--------------------------|
| Paving Bitumen 20/30 EM   | Structopave 10/20 FR     |
| Paving Bitumen 35/50 EM   | Paving Bitumen 40/50 AME |
| Paving Bitumen 40/60 EM   | Paving Bitumen 35/50 TN  |
| Paving Bitumen 50/70 EM   | Paving Bitumen 80/100 AF |
| Paving Bitumen 70/100 EM  |                          |
| Paving Bitumen 100/150 EM |                          |
| Paving Bitumen 160/220 EM |                          |
| Paving Bitumen 160/220 H  |                          |

### Learn more

