

Mobil DTE 10 Excel™ Series

High-performance lubricants designed for modern hydraulic systems



Energy lives here™

Product features

Mobil DTE 10 Excel™ Series hydraulic oils are engineered to help minimise power consumption and handle the demands of today's high-pressure equipment. These state-of-the-art oils provide:

- Powerful equipment protection designed to help limit breakdowns
- Longer oil and filter change intervals
- Hydraulic system efficiency designed to surpass even our standard-setting Mobil DTE™ 20 Series oils

Potential benefits

Mobil DTE 10 Excel Series zinc-free hydraulic oils help:

- 1 Minimise operating and maintenance costs
- 2 Optimise time between oil and filter changes
- 3 Maximise component life
- 4 Provide reliable startup and pump protection at a wide temperature range

Up to

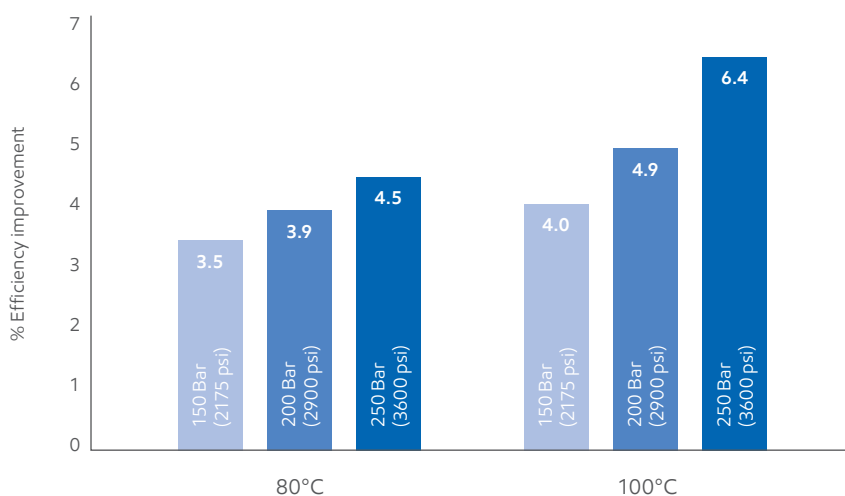
6%

increase in hydraulic efficiency.*

Mobil DTE 10 Excel Series lubricants provided hydraulic pump efficiency benefits up to 6 per cent when compared with a typical reference hydraulic fluid in controlled bench testing.

Hydraulic efficiency – bench test

Overall efficiency results for Mobil DTE 10 Excel

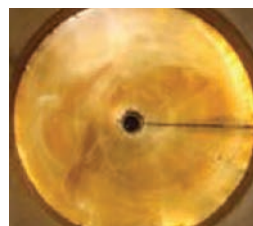


*The energy efficiency of Mobil DTE 10 Excel™ relates solely to the fluid performance when compared to conventional Mobil-branded hydraulic fluids. The technology used allows up to 6 per cent increase in hydraulic pump efficiency compared to Mobil DTE™ 20 series when tested in standard hydraulic applications under controlled conditions. The energy efficiency claim for this product is based on test results on the use of the fluid conducted in accordance with all applicable industry standards and protocols. Results may vary based on operating conditions and equipment.

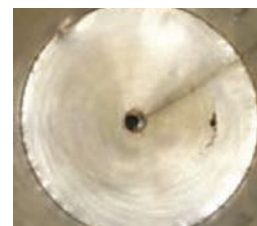
Mobil DTE 10 Excel™ Series

Keep-clean performance

In demanding proprietary MHFD testing, Mobil DTE 10 Excel™ Series hydraulic oils outlasted competitive mineral-based products, keeping systems cleaner up to three times longer.



Leading competitor
750 hours



Mobil DTE 10 Excel Series
2,500 hours

Typical properties

Mobil DTE 10 Excel	15	22	32	46	68	100	150
ISO Viscosity Grade	15	22	32	46	68	100	150
Viscosity, ASTM D 445							
cSt @ 40°C	15.8	22.4	32.7	45.6	68.4	99.8	155.6
cSt @ 100°C	4.07	5.07	6.63	8.45	11.17	13.00	17.16
Viscosity Index, ASTM D 2270	168	164	164	164	156	127	120
Brookfield Viscosity ASTM D 2983, cP @ -20°C			1090	1870	3990	11240	34500
Brookfield Viscosity ASTM D 2983, cP @ -30°C			3360	7060	16380	57800	
Brookfield Viscosity ASTM D 2983, cP @ -40°C	2620	6390	14240	55770			
Tapered Roller Bearing (CEC L-45-A-99), % Viscosity Loss	5	5	5	7	11	7	7
Density 15°C, ASTM D 4052, kg/L	0.8375	0.8418	0.8468	0.8502	0.8626	0.8773	0.8821
Copper Strip Corrosion, ASTM D 130, 3 hrs @ 100°C	1B	1B	1B	1B	1B	1B	1B
FZG Gear Test, DIN 51354, Fail Stage	-	-	12	12	12	12	12
Pour Point, °C, ASTM D 97	-54	-54	-54	-45	-39	-33	-30
Flash Point, °C, ASTM D 92	182	224	250	232	240	258	256
Foam Sequence I, II, III, ASTM D 892, ml	20/0	20/0	20/0	20/0	20/0	20/0	20/0
Dielectric Strength, kV, ASTM D877	45	54	49	41			
Acute Aquatic Toxicity (LC-50, OECD 203)	pass	pass	pass	pass	pass	pass	pass

Mobil DTE 10 Excel Series oils outlast conventional hydraulic fluids by up to

3X*

*Based on Mobil™ Hydraulic Fluid Durability (MHFD) testing.