

M/S Sea Venture



An ancient name for
a lovely new luxury cruise ship
by K.V.W. Lawrence

Early last June Flagship Cruises, Inc. entered its beautiful new luxury liner, M/S *Sea Venture*, in the growing North American cruising trade. A joint venture of Fearnley & Eger and Oivind Lorentzen—Norwegian Cruise-ships A/S, Oslo—the new vessel will make thirty-two weekly cruises each year to Bermuda followed by other cruises to the Caribbean as well as world cruises. She is to be joined by a sistership, the M/S *Island Venture*.

Here are her general particulars:

Length overall 550 feet
Molded breadth 80 feet
Draft 24 feet 7 inches
Gross tonnage 19,903 tons

Power is supplied by four Mobil fueled and lubricated, medium-speed, Fiat Model C 4210 SS diesel engines total rating 18,000 bhp. They give her a service speed of twenty knots. She is equipped with gyrofin stabilizers, has twin rudders and a bow thruster.

Built at Rheinstahl Nordseewerke, G.m.b.H., Emden, she has a total berth capacity of 750, but with two in a room this reduces to 646. In addition, she has all-weather air conditioning throughout.

We at Mobil are proud to have a role to play in the safe operation of this beautiful new vessel. We salute her with this story in pictures and wish her many a smooth voyage.

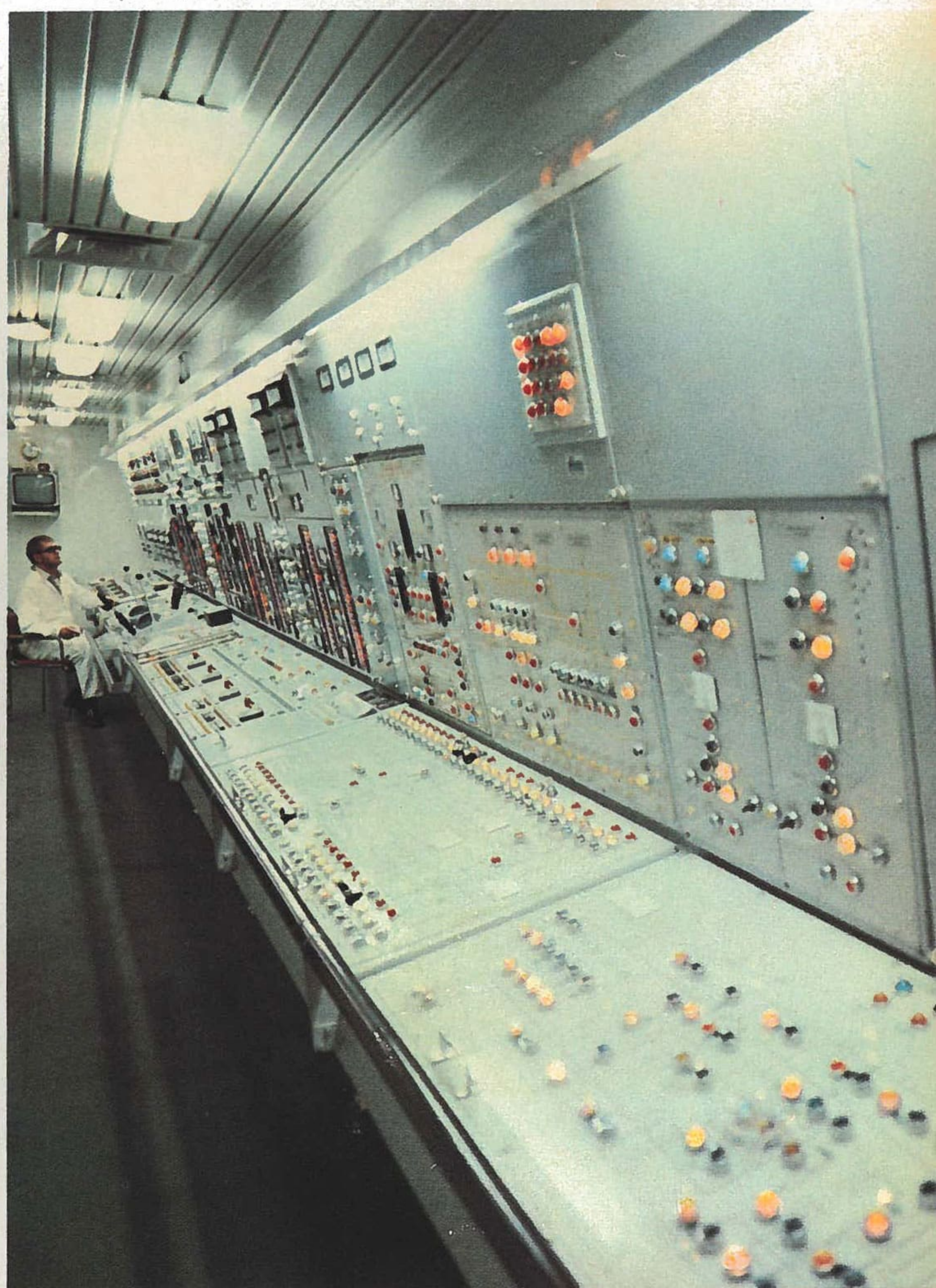
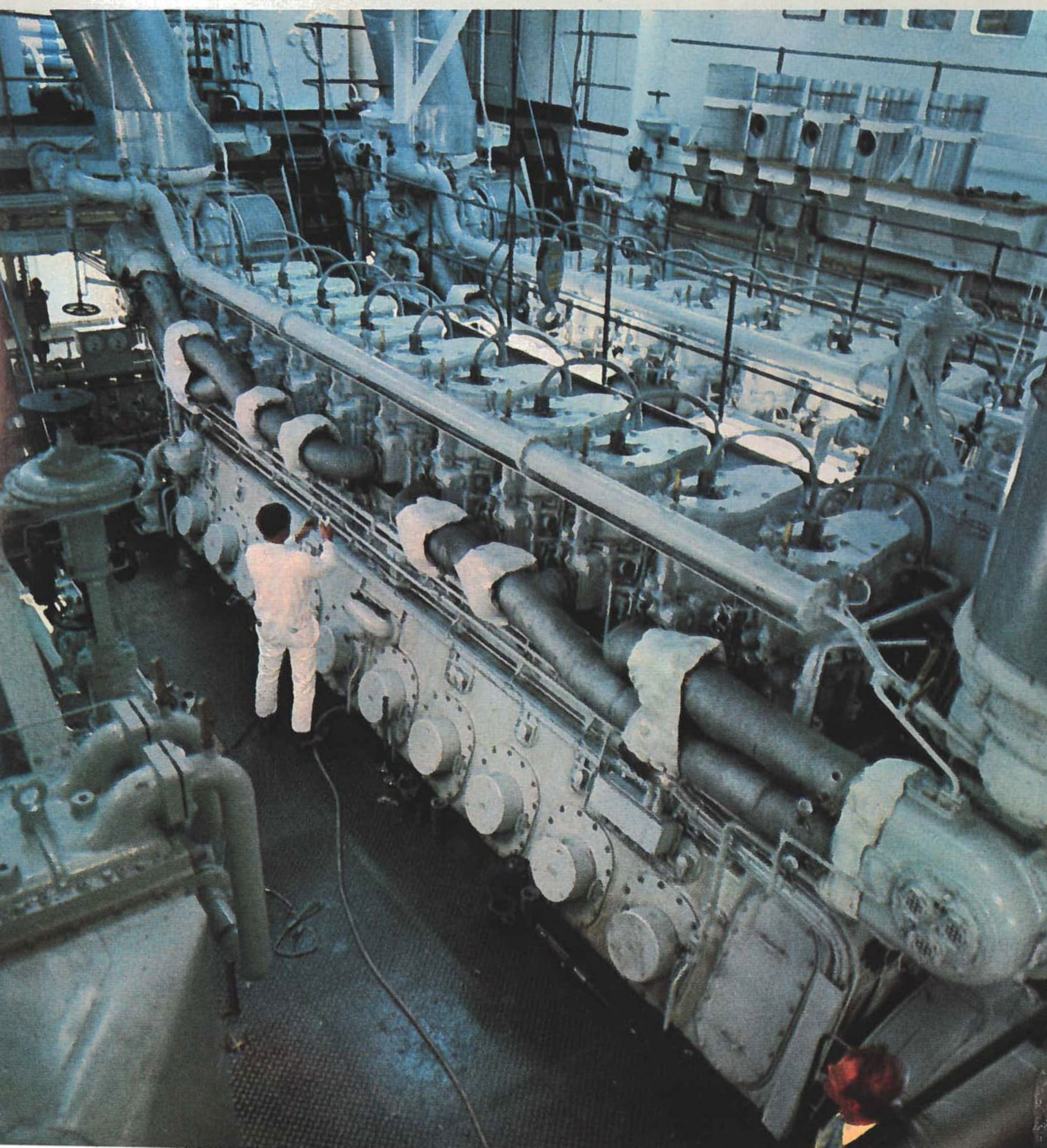
(Unless otherwise noted, pictures by Trans-Ocean Photos, Inc.)

Photograph of the *Sea Venture* in the center spread by W. Scovors, Mobil



Left—Bridge has all latest navigating gear including remote controls for the main engines

Below—Engine room control panels which in effect are the ship's nerve center



Left—Two of the four, ten-cylinder, Mobil lubricated and fueled Fiat Model C 4210 SS diesel engines. Two are hooked via reduction gears to each propeller shaft